

# starmix

## WORKS - LINE

The new starmix WORKS-LINE brings concentrated vacuuming know-how now also for the price-sensitive entry-level range





Our price-value hit - starmix Works-Line is produced in Electrostar factory in Shanghai under highest quality standards. The series includes a range of products that are simpler and therefore cheaper, but still high quality machines, and are ideally suited for the DIY sector.

Works-Line units stand for

- ✓ Outstanding price-performance ratio
- ✓ 2-year warranty
- ✓ Accessories included in the scope of delivery
- ✓ Proven performance data in suction power and filter cleaning



ENERGETIC from p. 4



FLEXO from p. 6





ASH VACUUM CLEANER from p. 8



STARSWEEP p. 10



CLEANING MOUSE p. 11

## Energetic range

# Strong. Versatile. Safe. Low-priced.

The Energetic vacuum cleaners of the new Works-Line offer a multitude of professional functional features with top suction power and that at an unbeatable price.

The new specialist for the craftsman is available in dust classes M and H and is thus a strong partner for all work on the construction site and in the workshop.

✓ The only vacuum cleaner with **semi automatic filter cleaning** in this price segment, ensures **constantly high air flow** after filter cleaning and thus **higher productivity**.

✓ The **airflow measurement** monitors the real airflow **with high precision** and warns the customer if it falls below the specified minimum value.



### „Good on foot“

Extremely robust wheels with rubber coating and a metal axle provide the necessary robustness.



### Convenient emptying

Thanks to a simple-to-use drain plug, liquids can be emptied easily.



### All stowed away

All the accessories supplied can be neatly stowed via the slots, as well as the hose by means of two hose hooks that can be hooked onto the side of the device.



### Clear operating panel

- Appliance socket for switching the vacuum cleaner ON/OFF via power tools
- Volume flow monitoring: visual and acoustic warning signal
- Filter bag level indicator
- Stepless speed regulator
- Preselection switch hose diameter
- ON/OFF/AUTO switch



**Energetic APDM-1430**  
For wet and dry vacuuming,  
with filter cleaning, 30l container



**Energetic APDH-1430**  
For wet and dry vacuuming,  
with filter cleaning, 30l container

Artikel-Nr.	110042	110066
<b>Scope of delivery</b>		
<b>Accessories</b>	<b>*see accessories</b>	<b>*see accessories</b>
Filter bag	yes, 1 pc FBV 30, fleece filter bag Repurchase in 5-pack art. no. 460772	yes, 1 pc FBVPE 30, fleece filter bag in PET bag Repurchase in 5-pack art. no. 460482
<b>Equipment</b>		
Main filter	FPP 3500, WS Dust retention: 99,9 % Art. no.: 460727	FPP 5000 HEPA, WS Dust retention 99,995 % Art. no.: 460475
Filter cleaning	Semi-automatic, PressClean	Semi-automatic, PressClean
Appliance socket	yes	yes
Speed control	yes, stepless	yes, stepless
Hose winding	yes	yes
Blowing function	no	no
Drain function	yes	yes
Parking position	yes	yes
Rubberised wheels	yes	yes
Stand-by-LED	yes	yes
Water level detection	yes	yes
Accessories storage (slots)	yes	yes
<b>Technical data</b>		
Power consumption (max.)	Watt 1400	1400
Volume flow (max.)	l/s 70	70
Vacuum (max.)	mbar 220	220
Container volume (max.) - Gross-Dust- Water	l 30 - plastic	30 - plastic
Sound pressure level	dB(A) 76	76
Dimensions	L x W x H 39,5 x 38 x 61,5 cm	39,5 x 38 x 61,5 cm
Weight	kg 12,5	12,5
Power cable length	m 5 (black)	5 (black)
Maximum reach	m 9	9

## ACCESSORIES\*

### Energetic APDM-1430

- 1 x Hose AS 35-350, WS (46099)
- 1 x Handle 35 with supplementary air slide, WS (460505)
- 2 x Suction tube steel chrome 35-50, WS (460512)
- 1 x Floor nozzle 35, WS with rubber and brush strips (460529)
- 1 x Crevice nozzle, WS (460710)
- 1 x Tool sleeve WS (460567)
- 1 x Foamfilter, WS (460543)
- 1 x Suction tube holder Energetic, WS (460536)
- 2 x Hose hook Energetic, WS (460550)



### Energetic APDH-1430

- 1 x Hose AS 35-350, WS (46099)
- 1 x Handle 35 with supplementary air slide, WS (460505)
- 2 x Suction tube steel chrome 35-50, WS (460512)
- 1 x Floor nozzle 35, WS with rubber and brush strips (460529)
- 1 x Crevice nozzle, WS (460710)
- 1 x Tool sleeve WS (460567)
- 1 x Foamfilter, WS (460543)
- 1 x Suction tube holder Energetic, WS (460536)
- 2 x Hose hook Energetic, WS (460550)



## Flexo range

# Flexo - a benefit for everyone

The all-rounder for the beginner's range and wallet.

As a specialist in the DIY sector, the Flexo vacuums are ideal for small craft work, as well as applications around the house, workshop, garage, garden and car. Versatile and reliable in the result.



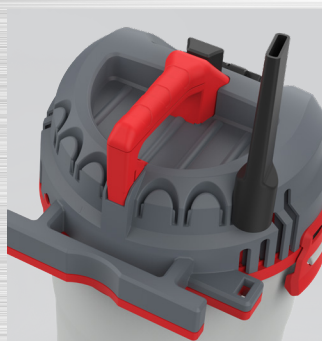
### Blowing function

By changing the suction hose from the grey to the red socket, the suction function becomes a powerful blowing function.



### Filter cleaning

The filters are cleaned by using the function PressClean - hold the hose closed and press the switch several times (min. 3x).



### Neat and tidy

All of the included accessories can be neatly stowed away via the slots, as well as the cable by means of an integrated cable hook.



### Control panel

The clearly arranged control panel houses the ON/OFF switch and a power socket with automatic switch-on for power tools (Flexo AP-1420 only).



**Flexo P-1420**  
For wet and dry vacuuming,  
with filter cleaning, 20l container



**Flexo AP-1420**  
For wet and dry vacuuming,  
with filter cleaning, 20l container

Article no.	110103	110110
<b>Scope of delivery</b>		
<b>Accessories</b>	<b>*see accessories</b>	<b>*see accessories</b>
Filter bag	yes, 1 pc FBV 20, fleece filter bag Repurchase in 5-pack art. no. 462578	yes, 1 pc FBV 20, fleece filter bag Repurchase in 5-pack art. no. 462578
<b>Equipment</b>		
Main filter	FPP 750, WS Art. no.: 462561	FPP 750, WS Art. no.: 462561
Filter cleaning	Semi-automatic, PressClean	Semi-automatic, PressClean
Appliance socket	no	yes
Speed control	no	no
Hose winding	no	no
Blowing function	ja	yes
Drain function	no	no
Parking position	yes	yes
After running	no	yes
Water level detection	yes	yes
Antistatically prepared	no	no
Accessories storage (slots)	yes	yes
<b>Technical data</b>		
Power consumption (max.)	Watt	1400
Volume flow (max.)	l/s	30
Vacuum (max.)	mbar	216
Container volume (max.) - Gross-Dust- Water	l	20 - plastic
Sound pressure level	dB(A)	76
Dimensions	L x W x H	32,9 x 36,1 x 53 cm
Weight	kg	5
Power cable length	m	5
Maximum reach	m	9

## ACCESSORIES\*

### Flexo P-1420

- 1 x Hose Ø 32, 3 m
- 1 x Floor nozzle
- 1 x Handle, with supplementary air slide, WS (460505)
- 2 x Suction tube, plastic
- 1 x Crevice nozzle, WS (460710)
- 1 x Inflation kit
- 1 x Foam filter



After-sale alternative:  
Floor nozzle 35, WS 460529  
Suction tube St Cr 35-50, WS 460512

### Flexo AP-1420

- 1 x Hose Ø 32, 4 m
- 1 x Floor nozzle
- 1 x Handle, with supplementary air slide, WS (460505)
- 2 x Suction tube, plastic
- 1 x Crevice nozzle, WS (460710)
- 1 x Inflation kit
- 1 x Foam filter
- 1 x Tool sleeve



After-sale alternative:  
Floor nozzle 35, WS 460529

## AV range

# Ashes to ashes - a clean business

Grill, fireplace or stove - as much as we like to use them, we hate to clean them. Removing the ashes can be quite a messy business. All the better if a small, compact vacuum cleaner is available to quickly remove the ashes - with the AV series, this is even possible at a low price.



### Easy to use

Large foot switch for ON/OFF.  
Manual filter cleaning - **PressClean**. Simply hold the hose closed and press the switch.



### Two-stage filter system

To protect the main filter, a washable pre-filter is placed over the cellulose main filter.



### Battery - one for all

The AV P-15 18V battery-powered ash vacuum cleaner is a product from the CAS system and can be combined with all 18V battery packs and chargers from over 30 CAS brands. Further information on the CAS system at [www.cordless-alliance-system.com](http://www.cordless-alliance-system.com)

### 100% Your benefits

- ✓ Save money
- ✓ Save time
- ✓ Save resources





**AV P-615**  
For dry vacuuming  
with filter cleaning, 15l container



**AV P-15 18V**  
For dry vacuuming,  
with filter cleaning, 15l container

Article no.		100159	110011
Scope of delivery			
Accessories		<b>*see accessories</b>	<b>*see accessories</b>
Filter bag		yes, 1 pc FBPP 15, PP disposal bag Repurchase in 5-pack art. no. 462073	yes, 1 pc FBPP 15, PP disposal bag Repurchase in 5-pack art. no. 462073
Equipment			
Main filter		FF 3000, WS, flat-fold filter cellulose Art. no. 459608	FF 3000, WS, flat-fold filter cellulose Art. no. 459608
Filter cleaning		Semi-automatic, PressClean	Semi-automatic, PressClean
Appliance socket		no	no
Speed control		no	no
Hose winding		yes	yes
Blowing function		no	no
After running		no	no
Water level detection		no	no
Antistatically prepared		no	no
Accessories storage (slots)		yes	yes
Technical data			
Voltage	Volt	220-240V/50-60Hz	18
Running time with 1 x 18V 5.2 Ah / 2.0 Ah battery	Min.	-	21 approx. / 8 approx.
Power consumption (max.)	Watt	600	350
Volume flow (max.)	l/s	23	20
Vacuum (max.)	mbar	160	120
Container volume (max.) - Gross-Dust- Water	l	15 - steel	15 - steel
Sound pressure level	dB(A)	n.a.	70,5
Dimensions	L x W x H	31,2 x 35 x 38,5 cm	31,2 x 35 x 38,5 cm
Weight	kg	2,8	2,8
Power cable length	m	4	-
Maximum reach	m	5,3	∞

## ACCESSORIES\*

### AV P-615

- 1 x Aluminium reinforced suction hose 1.3 m
- 1 x Aluminium scraper nozzle
- 1 x Pre-filter FSP 630, WS (462080)



### AV P-15 18V

- 1 x Aluminium reinforced suction hose 1.3 m
- 1 x Aluminium scraper nozzle
- 1 x Pre-filter FSP 630, WS (462080)



#### Battery and charger not included!

Battery recommendation:  
Battery pack 18V Li-Power 2.0 Ah  
Running time: 8 min. approx.  
Article no. 461205

Charger recommendation:  
Battery charger SC 30  
Charging time for Li-Power 18V 2.0 Ah: 30 min.  
Article no. 462219

## StarSweep range

# Leaf to Leaf

Anyone who has their own yard or at least has to do the („popular“) sweeping on the pavement, will appreciate the benefits of a sweeper. If the useful device then does its job at an affordable price, what more do you want - CHECK ✓



### StarSweep 65

For use around the house, in the garden and smaller commercial units



### Overhanging circular brooms

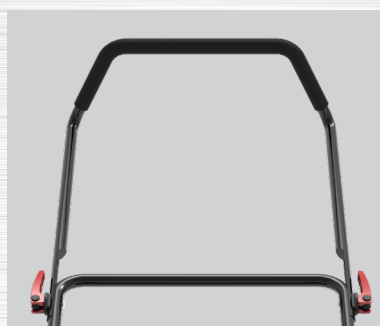
With the circular brooms protruding on both sides, a higher sweeping performance is achieved.

<b>Article no.</b>		130170
<b>Equipment</b>		
Drive		V-belt
Circular brooms protruding on both sides		yes
Side guide		no
Brush hold-down clamp		no
Brush height adjustment		no
Height adjustable push handle		yes, 2 level
Fine dirt brush		yes
<b>Technical data</b>		
Brush drive		manual
Sweeping width	cm	65
Container volume (max.)	l	18
Sweeping capacity	m <sup>2</sup> /h	2100
Weight	kg	10



### Space-saving

The push handle can be folded twice, making the sweeper convenient and compact to store.



### Comfortable grip

Thanks to the padded push handle, pushing the machine is particularly comfortable.



### Versatile use

Specials range

# Cleaning mouse - Anti-crumbs

Small but mighty, and a practical helper in every household, office, canteen, .... everywhere where it „crumbs“.



**Cleaning mouse**  
For dry cleaning on smooth surfaces



Article no.		107707
Equipment		
Main filter		Meshfilter
<b>Technical data</b>		
Power consumption (max.)	Watt	3
Voltage (max.)	Volt	3,2
Volume flow (max.)	l/s	3,9
Vacuum (max.)	mbar	3
Dimensions	L x W x H	10,5 x 8,5 x 6,8 cm
Weight	kg	0,16



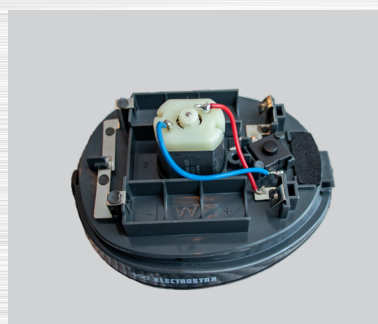
### Easy to use

The cleaning mouse has an ON/OFF switch on the top. The push button on the back is used for emptying.



### Filter

A mesh filter keeps the coarsest dirt away from the engine.



### Battery compartment

The battery compartment is easily accessible. The cleaning mouse is ready to use with 2 x AA batteries (not included).



### Versatile use



**WORKS - LINE**

**VERSATILE AND AFFORDABLE**